

# Riverdale and Rock Falls



# School Reorganization



Prepared by

Robert G. Rogers

# Reorganization Options

- 1. Consolidation**
- 2. Annexation**
3. School District Conversion
4. High School Deactivation
5. Cooperative High School Formation

# Consolidation

- ...is the merger of two or more existing districts to form or create a new district.

# Dissolution/Annexation

All of one school district is incorporated into one or more school districts thereby dissolving the original school district.

- A new district is not created.
- A new board is not elected.
- No new tax rates.

# Dissolution/Annexation

- Two ways to annex:
  1. Voluntary Dissolution/Annexation
  2. Dissolution/Annexation
- Voluntary – no referendum
- The board of education and citizens of the community approve of the annexation.
- Petition the Regional Board of Trustees.

# Reorganizations 2000 to 2011

- Consolidation • 17
- Annexation • 15
- Conversion • 1
- Deactivation • 6
- Hybrid Formation • 1
- Cooperative HS • 1
- Reactivate HS • 1
- Total • 42

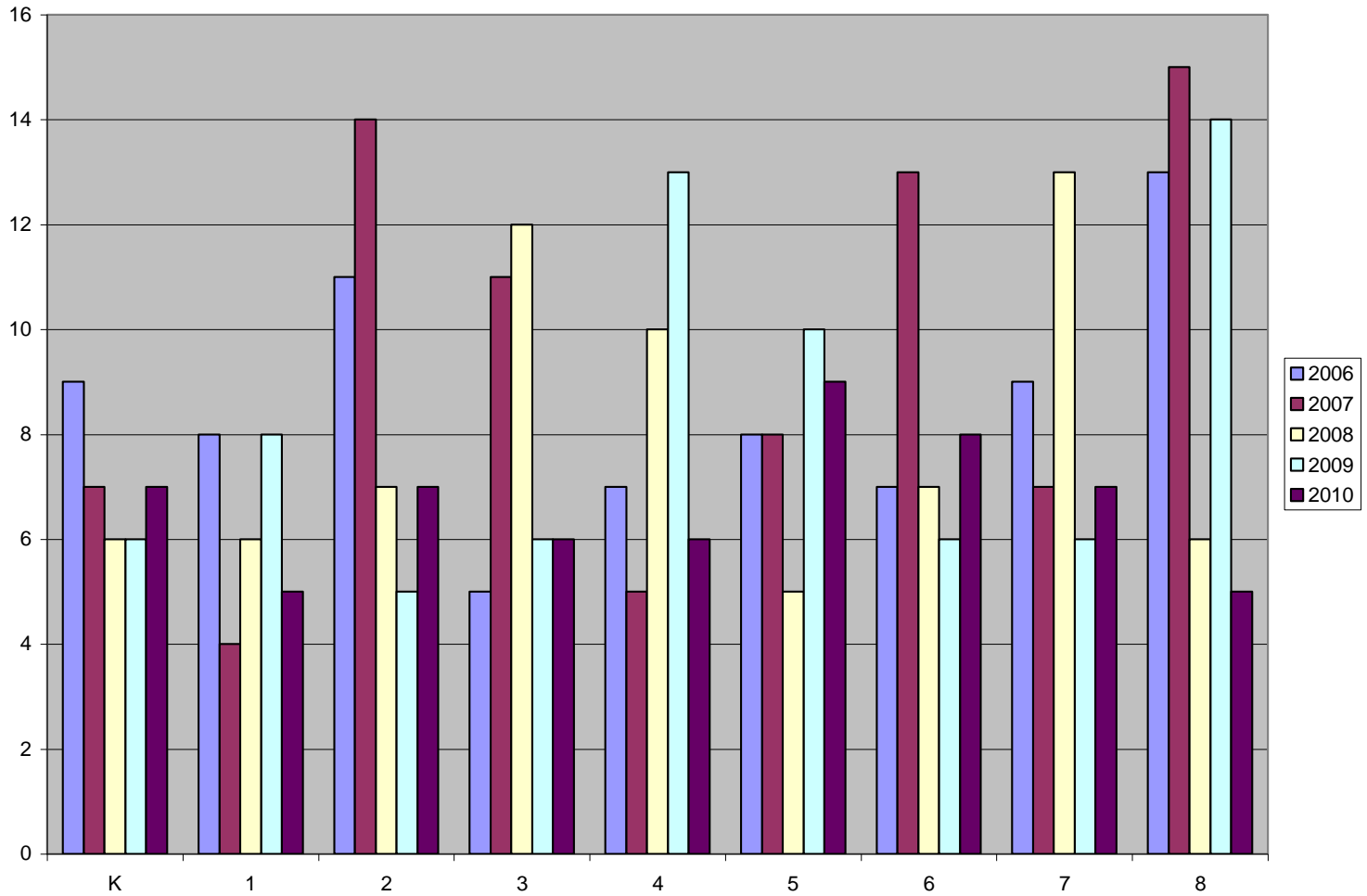
# Areas Studied

- Report Cards
- Enrollment
- Facilities
- Curriculum
- Athletics & Activities
- Transportation
- Finance
- Incentives

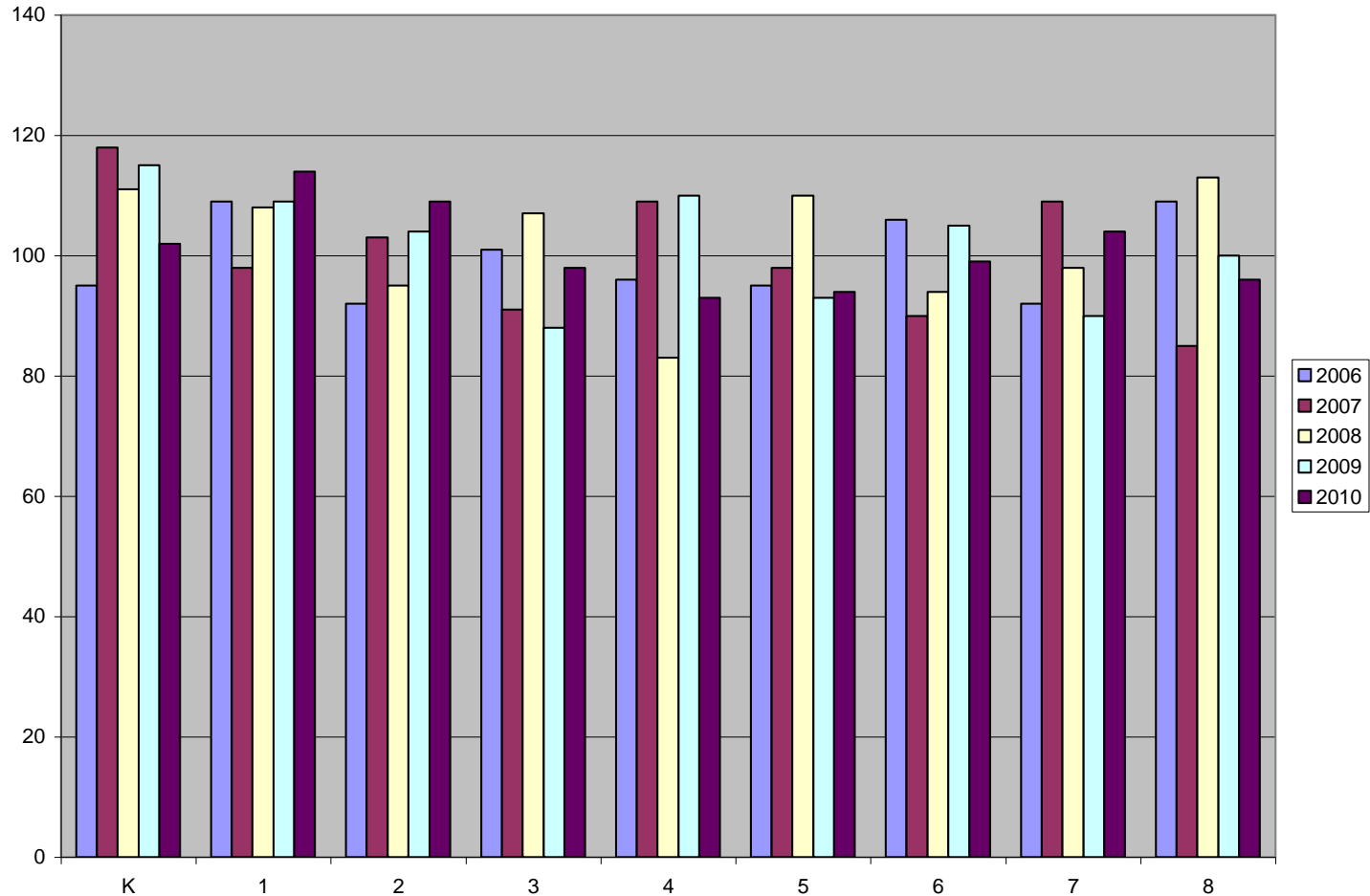
# Report Card Information

- Test Scores
- Class Size
- AYP
- ISAT
- R 4,5,& 8
- Lower than State
  - RF K,1,2,3,5 +
- Both districts made

# Riverdale Enrollment



# Rock Falls Enrollment



# Projected Enrollment

Grade	2011	2012	2013	2014	2015
K	118	120	117	117	116
1	109	118	118	117	117
2	119	109	118	118	117
3	116	119	109	118	118
4	104	116	119	109	118
5	99	104	116	119	109
6	103	99	104	116	119
7	107	103	99	104	116
8	111	107	103	99	104
Total	986	995	1003	1017	1034

# Facilities

- Riverdale
  - Older building
- Good condition
- Could be used for prekindergarten center/Early childhood center
- Rock Falls
  - Three Buildings
- Good condition
- Can use the Riverdale building

# Curriculum

- Curriculum and financial advantages are probably the two most important reasons for reorganization.
- Riverdale students would benefit from the Rock Falls curriculum.
- Riverdale students would benefit from self contained classes.
- Riverdale students test scores make AYP.

# Athletics & Activities

- Riverdale co-op program with Montmorency.
- Rock Falls has own program.
  - Riverdale participates in wrestling

# Transportation

- Both districts contract bus service
- Transportation would not be a problem

# Finances

## Riverdale

- EAV
  - \$9,249,546.00
- Tax Rate
  - \$3.01
- Fund Balances
  - \$477,711.00
- Revenue
  - Local 41.7%
  - State 39.5%
  - Federal 18.8%

## Rock Falls

- EAV
  - \$61,320,098.00
- Tax Rate
  - \$2.83
- Fund Balances
  - \$1,742,115.00
- Revenue
  - Local 26.9%
  - State 50.3%
  - Federal 22.8%



# Whiteside County From 2003 to 2008

- Percent of farm land decreased
- Percent of residential increased
- Commercial property increased
- TIF Districts \$ 10 million plus
- Homestead exemptions increased
- 2000 Census - 60,653 population
- 2010 Census - 58,498 population -3.6%

# Riverdale Problems

1. Enrollment – very small
2. No Hold Harmless – GSA \$316,042.50
  - 2008 \$400,877.00
  - 2009 \$385,350.26
  - 2010 \$325,374.01 (paid 43.68%)
  - 2011 \$325,691.44 (not paid)
3. State aid will continue to decrease

# Financial Incentives

- State Aid Difference
- Deficit Offset
- Teacher Salary Difference
- Certified Employee Pay of \$4,000.00

# State Aid Difference

- If the General State Aid (GSA) is less for the newly reorganized district in the first year than the General State Aid would have been that same year of the previously existing districts, ISBE will make supplementary state aid payments equal to the difference **for the first four years to the reorganized district.**

# Deficit Offset

- Deficits are calculated by totaling the fund balances in the education, operation & maintenance, transportation and working cash funds in each district.
- ISBE will make one supplemental state aid payment equal to the difference between the largest and smallest deficit.
- A positive fund balance is considered to have a deficit of zero.

# Teacher Salary Difference

- If there is a difference between the sum of the salaries earned during the previous year by teachers of the new district and the sum of salaries those teachers would have been paid if placed on the highest salary schedule, ISBE will make supplementary state aid payments equal to the difference **for the first four years to the newly reorganized district.**

# Certified Employee Pay of \$4000

- **For up to three years**, a reorganized district may receive a supplementary state aid payment equal to \$4000 for each certified employee who is employed on a full time basis for the school year.
- The number of payments depends upon the new districts rank in EAV/Pupil and ADA.

# Total Incentives

Incentive      Year 1      Year 2      Year 3      Year 4      Total

GSA	\$ 435.00	\$ 435.00	\$ 435.00	\$ 435.00	\$ 1,740.00
Deficit Offset	\$ 0.00	\$ 0.00	\$ 0.00	\$ 0.00	\$ 0.00
Certified Staff	\$ 0.00	\$ 324,000.00	\$ 324,000.00	\$ 324,000.00	\$972,000.00
Teacher Salary	\$ 104,488.00	\$ 104,488.00	\$ 104,488.00	\$104,488.00	\$417,952.00
<b>Total</b>	<b>\$ 104,923.00</b>	<b>\$428,923.00</b>	<b>\$428,923.00</b>	<b>\$428,923.00</b>	<b>\$1,391,692.00</b>

# Demographics – New District

- Area of District
  - EAV
  - Staff
    - Teachers
    - Administrators
    - Support
  - Total Enrollment
- 7.75 sq. miles
  - \$68,008,988.00
  - 116
    - 77
    - 4
    - 35
  - 973

# Riverdale & Rock Falls

Districts are contiguous.

1. Dissolution/Annexation
2. Consolidation

# Dissolution/Annexation

- Dissolution/Annexation would be the easiest way to reorganize.
- Voluntary Dissolution would be the simplest and least expensive. There is no referendum.
- If both districts agree- submit a petition to the ROE.

# Reorganization Continued

- Dissolution/Annexation would require a referendum.
- The referendum must pass in both districts to be successful.
- If successful, Riverdale would become part of the Rock Falls School District.
- Consolidation is available because the two districts are contiguous – “touching”.

# Consolidation Continued

- Calls for a referendum – must pass in both districts.
- A new school board election.
- Appoint a Committee of Ten
- A new school district name.
- New tax rate.

# Reorganization with Rock Falls

- Dissolution/Annexation
  - Voluntary (no referendum)
- Rock Falls probably not want to change the name of the district for 64 students.

# Riverdale Students...

1. Should be in a self-contained classroom with age like peers.
2. Should have age appropriate academic activities.
3. Should be able to play team games at recess.
4. Should have some academic competition.

# Final Thoughts

- Riverdale must do something very quickly. ***Financial trouble ahead!***  
**Check with school attorney**

# Time Frames for Annexation

- Voluntary Dissolution
  - 70 days from petition filing.
  - Board Hearing March 12, 2012
  - June 5, 2012 RBST Public Hearing
  - June 6, 2012 RBST Decision
  - 50 days from petition filing.
  - Board Hearing April 2, 2012
  - June 5, 2012 RBST Public Hearing
  - June 6, 2012 RBST Decision
- Dissolution/Annexation
  - Petition must be filed with ROE during the week of October 17, 2011.
  - Between November 3 and 24 RBST Public Hearing
  - Between November 15 and December 14 RBST Decision
  - Election March 20, 2012
  - *Must pass in both communities to be successful*

# Time Frames for Consolidation

- Week of September 11 file petition
- Between November 1 and 7 Public Hearing
- November 8 through November 21 Decision by ROE
- November 22 or November 23 Submit to ISBE
- November 24 through December 14 Decision by ISBE
- December 15 through January 18 (Contest Decision)
- January 19, 2012 Proposition submitted for Election
- March 20, 2012 General Primary Election
  
- *Must pass in both communities to be successful.*

